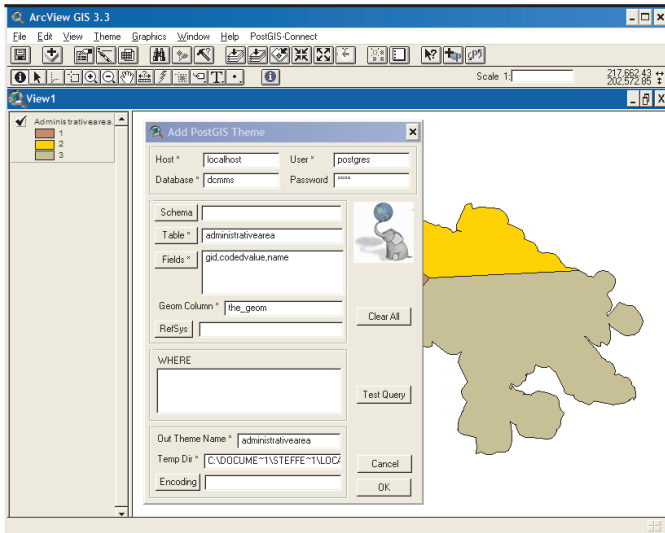


Integration of PostGIS data in ArcView GIS

AV PostGIS Connection Extension



AV PostGIS Connection Extension is a free interface between PostgreSQL/PostGIS and ArcView

Application

AV PostGIS Connection Extension is used to up- and download from and to PostGIS. It makes adding of PostGIS data as simple as adding a shapefile.

Profile

Easy to use

- Fully integrated in the ArcView GUI
- Integrated Windows Help file
- Installation Wizard
- Dialog driven

Flexible

- Open Source: Full source code is available; easy to extend e.g. with further processing options
- Custom configuration options

Cost-effective

- Freely available on the internet
- Low hardware requirements
- Uses the free PostGIS/PostgreSQL RDBMS technology

Powerful

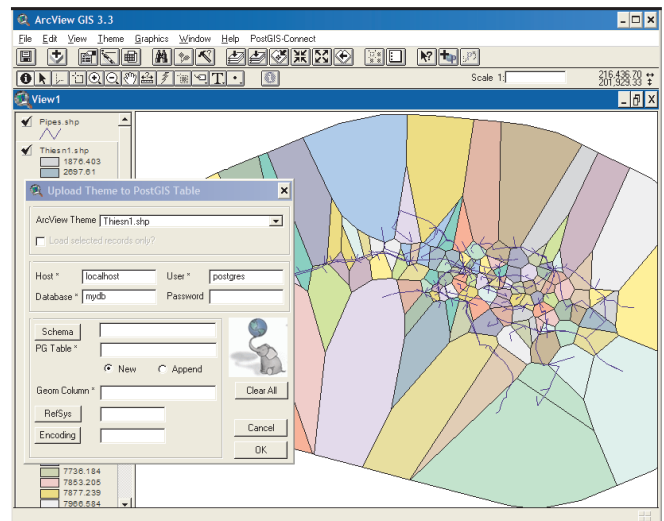
- Reprojection support
- Transparent encoding
- Supports PostgreSQL schemas
- Identify tool to query the database
- Allows to append data

Standards compliant

- Industry standards like OGC SF SQL, HTML, DocBook, PDF and UNICODE have been used

Popular

- Downloaded more than 500 times



AV PostGIS Connection Extension

Free software released under the MIT License.

AV PostGIS Connection Extension was originally developed by Armin Burger.

More information is available on the AV PostGIS Connection Extension website:

<http://avpgcon.sourceforge.net>

Distribution and Support:

Dc Water and Environment

P.O. Box 91308

Amman 11194

Jordan

Telephone: +962 (6) 58 511 36

Telefax: +962 (6) 58 248 75

Web: <http://www.dorsch.de>

Email: dcamman@dorsch.com.jo